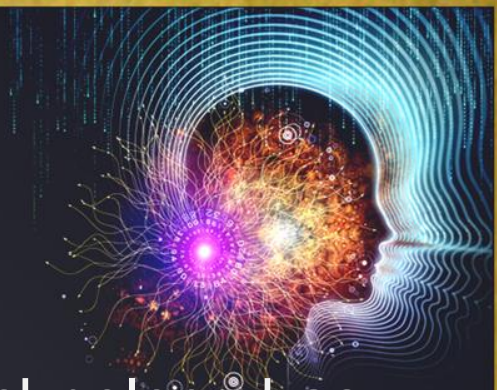




CONTINUAL NETWORKS



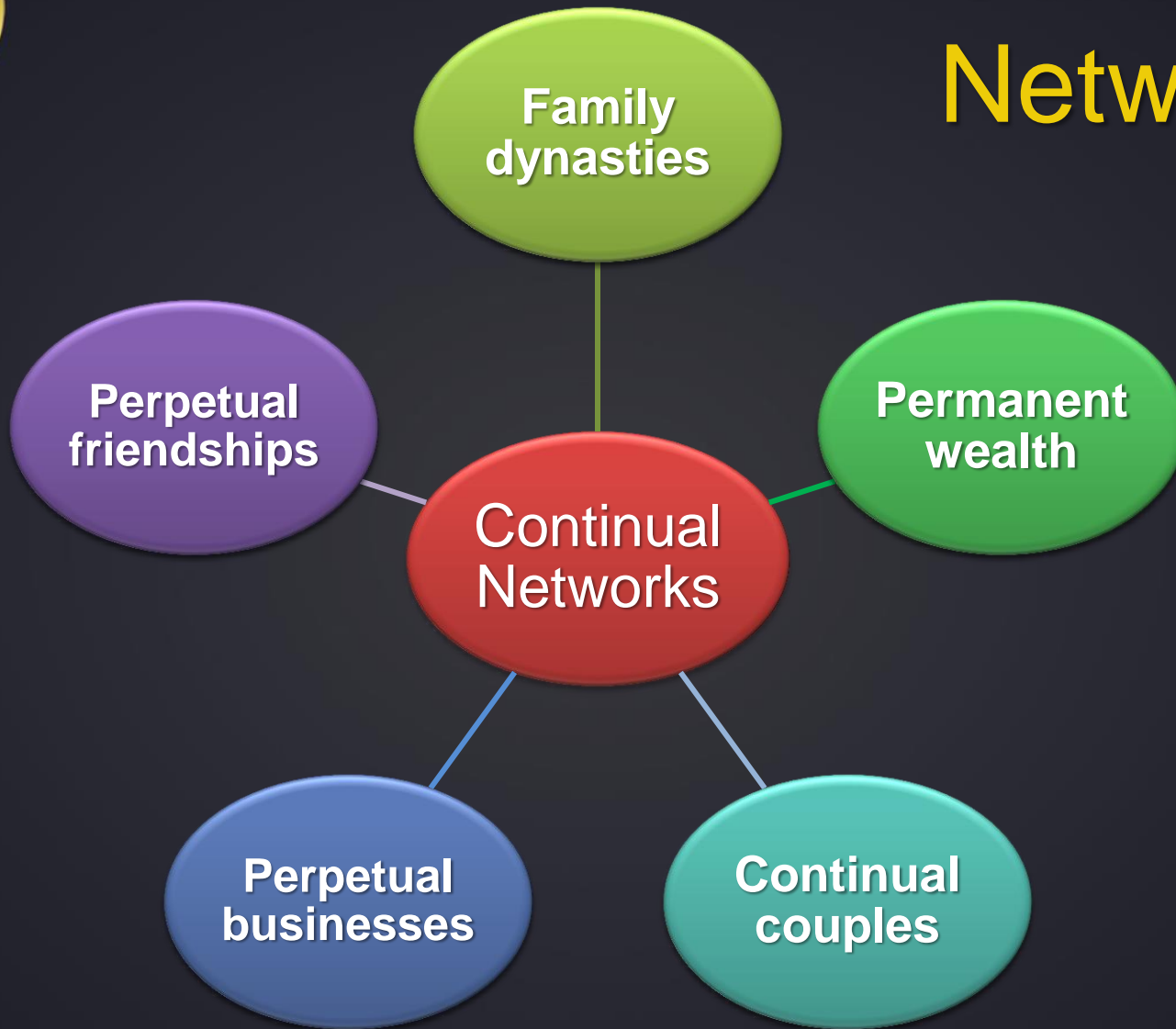
Applications



- The emergence of trans-life memory technology has profound implications for both the individual and society.
 - Facilitates accelerated personal and spiritual evolution for the individual
 - Enables people to build permanent connections with others in the trans-life memory system
- By storing and retrieving information across lifetimes, people can preserve their accumulated wisdom and build permanent family, business and personal networks.



Continual Networks



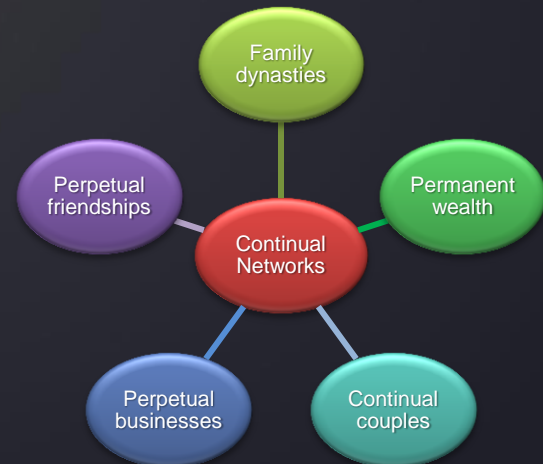
Continual Networks

- Magnify the rewards of success
- Foster greater progress in the arts and sciences
- Create the basis for new social forms
 - Family dynasties
 - Perpetual corporations
 - Continual marriages
- Facilitate permanent wealth



Applications Summary

- Continual networks will create new ways for people to make lasting connections
 - Perpetual business, family and social networks
- These revolutionary new social forms will alter the underlying fabric of society
 - Structure of families
 - Distribution of wealth





Continual Networks, Ltd.

- Trans-life memory system
 - Software development & programming
 - Computer system operations
 - Public relations
- Mission and charter
 - Charter reflects higher purpose of enterprise
 - Maintain purity of intent and sacred aspects of spirituality
 - Prevent commercialization of system with ads



Data Centers

- Economics of cloud computing will continue to improve between now and 2050
 - Majority of businesses will migrate IT to the cloud
 - Only the largest firms will retain their data centers
- Continual Networks will have its own data centers
 - Could eventually be half the size of Facebook
 - Also has unique archiving requirements
- CN will pilot in the IBM cloud and then build out data centers with volume



CONTINUAL NETWORKS

Global Data Centers



Arnick Robotics
18877 1871-1828 NAME: FOOD LIAISON
Description:
ARGBOT CONTROLLER
File Name: RRobot
Date: 12/28/1999 Rev: 2.0 24p
Sheet: 3 of 4 DEV
Drawn by: Aaron Richardson



Data Integrity

- Data uploaded by users today must be readable by computers of the future
 - Computer programs fifty years from now may no longer recognize current formats, e.g., .JPG, .PDF
- Solutions:
 - Periodically scan entire database and update expiring formats to new formats, or
 - Preserve the ability to run old programs which recognize old data formats for images, videos, documents and other content



Data Security

Exposure

- Hackers could attempt to derail the experiment by stealing user data and publicizing it over the internet

Data Security Plan

1. Divide user accounts into 2 parts:
 - **Public:** Searchable data open to the public over the internet
 - **Private:** Protected data which can only be accessed by account owners



Data Security

2. Keep private data offline

- Store private data on special archival storage quality devices
 - Currently, optical disks and tape libraries
 - Tomorrow, quartz crystal storage (Hitachi)
- Archival storage is not connected to the internet



Archival
Tape
Library



Data Security

3. Use sophisticated authentication (*not passwords*)
 - Vast majority of hacking involves stolen passwords
 - Authentication is via questions each user predefines, combined with artificial intelligence
 - Users don't use passwords to log on
 - They answer 5 questions each time (which they initially define)
 - These same 5 questions will be asked of them when they locate their accounts in the future
 - Repetition helps them remember the answers



Technology Transfer



Continual Networks

MEMORY
SCIENCE



EDUCATION
PROGRAMS



Future Life Institute

COGNITIVE
SCIENCE



Future Life University

Deliverables

Level	Future Life Institute	Future Life University	Continual Networks
Basic (Free)	<i>Publicity for public awareness</i>	<i>Introductory classes</i>	<i>Free basic accounts</i>
	<i>Free memberships</i>	● <i>System use</i>	● <i>Text</i>
	<i>Free education</i>	● <i>Trans-life psychology</i>	● <i>Connections</i>
	● <i>Introductory & overview</i>	● <i>Future life design</i>	● <i>Storage</i>
	● <i>Supporting research</i>		● <i>Hosting</i>
	● <i>System features & benefits</i>		● <i>Images</i>
	● <i>Further resources</i>		● <i>Video</i>
	<i>Conduct experiment</i>		
	<i>Publicize experiment results</i>		
Advanced (Paid)	Paid memberships	Advanced system classes	Paid premium accounts
	Membership services & benefits	● System administration	● 3 levels
	Membership events	● Running study groups	● More text
	Membership discounts	Advanced practitioner classes	● More connections
	● Future Life University	● Practitioner certification	● Larger storage
	● Continual Networks	Graduate level classes	● Longer hosting
		● Future life design	● More images
		● Trans-life psychology	● More video
		Future life counseling	● Digital currency
		– top level account	

Continual Networks Deliverables

Deliverable	Phase 0	Phase 1	Phase 2	Phase 3
Corporate				
Recruiting	Co-founders	Board	Leadership	Staff
Legal	Incorporation	PPM		
Fundraising		\$600K for Ph. 2	\$4M for Ph. 3	\$10M rollout
Engineering				
System			Prototype	Production A
Functions			Investors demo	Storage
User interface			Demo	Trans-Life Psych.
Education			--	User & Admin
E-Commerce			Plan	Live
Planning				
Project plan	Phase 1	Phase 2	Phase 3	Rollout
Business plan	Phase 1	Phase 2	Phase 3	Rollout
Marketing				
Users			100	100,000
Revenue				\$1.5 M



FUTURE LIFE INSTITUTE

Copyright © 2016 Future Life Institute. All rights reserved.